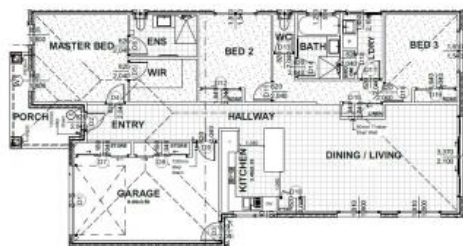


Leased



4 Jobe Way, Roxburgh Park



Ex Display Home

This near new 3 bedroom property has been used as a display home. It offers:

- Master bedroom with walk in robe and ensuite.
- Built in robes to remaining bedrooms
- Open plan kitchen and living area.
- Spacious kitchen with 900mm appliances, including dishwasher.
- Centrally located family bathroom with bath and separate toilet
- Ducted heating and evaporative cooling
- Single lock up garage with storage and internal access

All inspections will be conducted by private appointment. Please send through an email enquiry or contact Laura on 0423 326 975 to arrange an inspection.

The above information provided has been furnished to us by the vendor/s. We have not verified whether or not that information is accurate and do not have any belief in one way or the other in its accuracy. We do not accept any responsibility to any person for its accuracy and do no more than pass it on. All interested parties should make and rely upon their own inquiries in order to determine whether or not this information is in fact accurate.

3 2 1

Price \$400 per week \$1738 per month

Property Type Rental

Property ID 1566

Agent Details

Anne Rea - 0423326975

Office Details

Victorian House & Land Specialists
8 Universal Way Cranbourne West
VIC 3977 Australia
03 5995 3911

