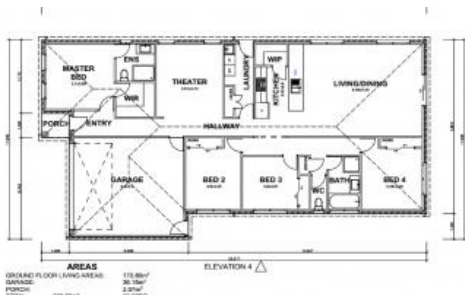


Sold

Lot 335 Pitfield Avenue, Cranbourne East



## Cheapest house and land package in Cranbourne!

LIMITED TIME OFFER! GREAT VALUE FAMILY HOME

Brand new house and land package available now in Cranbourne East. Located centrally within Cranbourne and close to all local amenities like Hunt club shopping centre, park avenue medical centre, transportation and schools. Victorian house and Land specialists providing an amazing opportunity to secure yourself a place to call home.

Fully customizable designs & finance options available. Call Vinay on 0405 695 442 for more information.

Features of the package include:

- 450W X 300H tiled niche to showers.
- Stainless steel dishwasher
- Coloured & sealed driveway and associated path up to 30sqm
- Panel lift door with automated lifter, remote controlled
- Mixer tapware (Basin/Shower/Wall sink/Laundry)
- 1 TV point connected to FTA antenna
- 20mm polished edge stone benchtops to kitchen
- 900mm stainless steel free standing oven with gas cooktop and Slideout rangehood

4 Bedrooms 2 Bathrooms 2 Car Spaces 375 m<sup>2</sup>

Price	SOLD
Property Type	Residential
Property ID	2
Land Area	375 m <sup>2</sup>
Floor Area	204 m <sup>2</sup>

### Agent Details

Anand Woodhoo - 0412976270

### Office Details

Victorian House & Land Specialists  
8 Universal Way Cranbourne West  
VIC 3977 Australia  
03 5995 3911



- Tiles to all wet areas
- Keyed locks to openable windows
- Soft close drawers throughout
- Twin pull-out kitchen bins
- Gas ducted heating
- Quality carpet & underlay in remaining areas
- Exhaust fans with draft stoppers
- Hard wired smoke detectors
- Solar Hot Water with Rinnai Hot water system with gas booster & cell
- Plus, a Lot more

We Also have packages available in:

- CRANBOURNE EAST
- CLYDE NORTH
- BEACONSFIELD
- OFFICER
- BUNYIP
- GARFIELD
- KOO WEE RUP

\*Price is subject to site costs, additional design guidelines & developer's approval. Base price includes standard brick façade. Price/information is subject to change without notice. Images are for illustration purpose only and house is to be constructed.

The above information provided has been furnished to us by the vendor/s. We have not verified whether or not that information is accurate and do not have any belief in one way or the other in its accuracy. We do not accept any responsibility to any person for its accuracy and do no more than pass it on. All interested parties should make and rely upon their own inquiries in order to determine whether or not this information is in fact accurate.