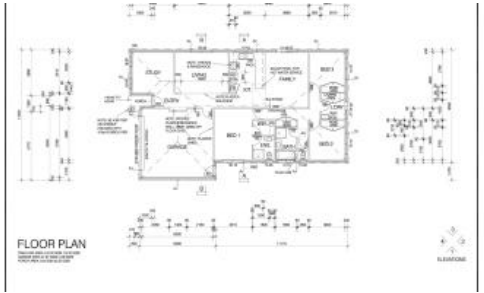


Sold

Lot 222 Remus Circuit (Lochaven), Cranbourne West



Titled & Ready to Build!

Brand New House & Land Now Available in Lochaven, Cranbourne West! Don't wait years to move in this block is titled and ready to build now. Fully customizable designs & finance options available.

Included Upgrades:

- Kitchen bench tops 20mm edge engineered stone.
- Coloured driveway & associated path up to 30m2.
- Panel lift door with automated lifter, remote controlled.
- Mixer tapware (Basin/Shower/Wall Sink/Laundry)
- Kitchen Sink 2 x main bowl.
- TV point connected to FTA antenna
- Soft close drawers throughout
- Pull out in cupboard twin bin
- Stainless steel appliances
- Dishwasher
- All floor coverings as plan.

4 Beds 2 Bathrooms 3 Car Spaces 392 m2

Price	SOLD
Property Type	Residential
Property ID	1
Land Area	392 m2
Floor Area	185.80 m2

Agent Details

Anne Rea - 0423326975

Office Details

Victorian House & Land Specialists
8 Universal Way Cranbourne West
VIC 3977 Australia
03 5995 3911



*Price is subject to site costs, additional design guidelines & travel when applicable. Base price includes standard brick façade. Price/information is subject to change without notice.

This block is North facing located in the Lochaven Estate within close proximity to Freeway access and public transport.

Plans for waterways, brand new shopping complex, primary and secondary school to be constructed all within walking distance.

Contact Courtney Newbound to discuss further on 0423 326 975

The above information provided has been furnished to us by the vendor/s. We have not verified whether or not that information is accurate and do not have any belief in one way or the other in its accuracy. We do not accept any responsibility to any person for its accuracy and do no more than pass it on. All interested parties should make and rely upon their own inquiries in order to determine whether or not this information is in fact accurate.