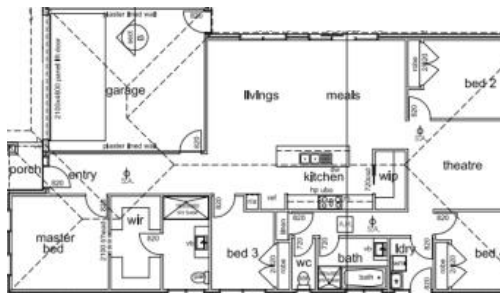
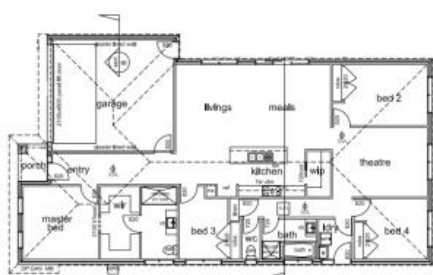


Sold

Lot 316 Virgona Way, Koo Wee Rup



Cheapest House and Land Packages in Koo Wee Rup (Last lot Stage 3)

TITLED LAND.. READY TO BUILD..

The Perfect First Home..

Immaculately presented home and land package located in one of Koo Wee Rup's most sought after areas is an opportunity not to be missed. This beautiful home comprises of 4 bedrooms: Master with en-suite and WIR, Home theatre and an open plan living, dining and kitchen area making entertaining a breeze. Seamless transition from inside to outside to a low maintenance backyard for kids to play. Additional features include solar hot water, stone benchtop and ducted heating. A complete family home situated close to all important amenities, walking distance to schools and shops.

Fully customizable designs & finance options available. Call Vinay on 0405 695 442 for more information.

***** FREE AUTUMN SPECIAL - 2550MM CEILING HEIGHT, 10

DOWNLIGHTS, 40MM EDGING TO KITCHEN BENCHTOPS, MICROWAVE SPACE IN ADDITION TO STANDARD INCLUSION *****

Features of the package include:

- 450W X 300H tiled niche to showers.
- Stainless steel dishwasher
- Coloured & sealed driveway and associated path up to 30sqm

🛏 4 🚿 2 🚗 2 📏 540 m2

Price	SOLD
Property Type	Residential
Property ID	3
Land Area	540 m2
Floor Area	204.38 m2

Agent Details

Anand Woodhoo - 0412976270

Office Details

Victorian House & Land Specialists
8 Universal Way Cranbourne West
VIC 3977 Australia
03 5995 3911



- Panel lift door with automated lifter, remote controlled
- Mixer tapware (Basin/Shower/Wall sink/Laundry)
- 1 TV point connected to FTA antenna
- 20mm polished edge stone benchtops to kitchen
- 900mm stainless steel free standing oven with gas cooktop and Slideout rangehood

- Tiles to all wet areas
- Keyed locks to openable windows
- Soft close drawers throughout
- Twin pull-out kitchen bins
- Gas ducted heating
- Quality carpet & underlay in remaining areas
- Exhaust fans with draft stoppers
- Hard wired smoke detectors
- Solar Hot Water with Rinnai Hot water system with gas booster & cell
- Plus, a Lot more

We Also have packages available in:

- CRANBOURNE EAST
- CLYDE NORTH
- BEACONSFIELD
- OFFICER
- BUNYIP
- GARFIELD
- KOO WEE RUP

*Price is subject to site costs, additional design guidelines, travel when applicable & developer's approval. Base price includes standard brick façade. Price/information is subject to change without notice. Images are for illustration purpose only and house is to be constructed.

The above information provided has been furnished to us by the vendor/s. We have not verified whether or not that information is accurate and do not have any belief in one way or the other in its accuracy. We do not accept any responsibility to any person for its accuracy and do no more than pass it on. All interested parties should make and rely upon their own inquiries in order to determine whether or not this information is in fact accurate.