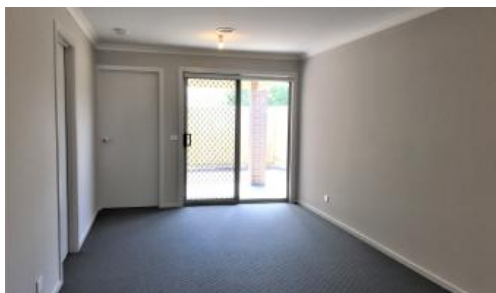


Leased



19 Iceberg Rd, Beaconsfield



## Brand New and Ready to Move In

This 4 bedroom home is sure to impress with everything you will need, situated in a quiet location

- Master bedroom with ensuite and walk in robe
- Centrally located bathroom complete with bath and shower
- Open plan kitchen with stone bench , stainless steel appliances including dishwasher and a massive walk in pantry
- Laundry with external access
- Alfresco area perfect for entertaining
- Remote control garage with internal access
- Heating and cooling for all year round comfort
- Low maintenance gardens

🛏 4 🚿 2 🚗 1

**Price** \$380.00 per week

**Property Type** Rental

**Property ID** 362

### Agent Details

Anne Rea - 0423326975

### Office Details

Victorian House & Land Specialists  
8 Universal Way Cranbourne West  
VIC 3977 Australia  
03 5995 3911



This perfect family home is located close to Schools, 5 minutes to beaconsfield train station, family restaurants, minutes to the Princes Highway, Shopping

centres and the Cardinia Creek Parklands.

Beaconsfield is situated 46 km south-east of Melbourne's CBD a stone throw away from Berwick.

With everything so close to your door step and perfectly located close to all amenities why would you want to be anywhere else?

Contact Courtney Newbound to inspect on 0423 326 975

The above information provided has been furnished to us by the vendor/s. We have not verified whether or not that information is accurate and do not have any belief in one way or the other in its accuracy. We do not accept any responsibility to any person for its accuracy and do no more than pass it on. All interested parties should make and rely upon their own inquiries in order to determine whether or not this information is in fact accurate.