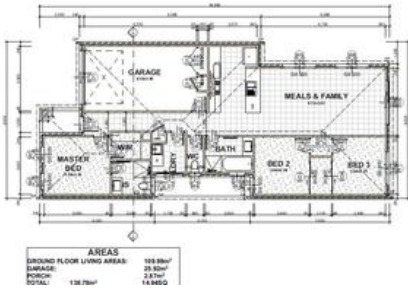


Sold



Lot 26 Bentham Street, Roxburgh Park



Titled Land & Ready To Build!!!

Nestled in the centre of Roxburgh Park is a delightful development known as Roxburgh Park Central. The development will feature a shopping centre precinct with a 1800m² supermarket, novelty shops and a gymnasium. It is situated close to all amenities such as primary & high schools, Roxburgh Park train station, Roxburgh Park shopping precinct, and located only 25.5km from the CBD of Melbourne.

For first home buyers the bonus \$10,000 first home buyer grant and \$0 stamp duty offer also applies!!! So it's never been a better time for you first home buyers to get into the market with this outstanding value for money house and land package offering from the Victorian House & Land Specialists!!!

Features of the package include:

- All Plans and Permits
- Engineering- Slab Design H Class
- 7 Year Structural Warranty Insurance
- Floor coverings
- Landscaping
- Blinds

The above information provided has been furnished to us by the vendor/s. We have not verified whether or not that information is accurate and do not have any belief in one way or the other in its accuracy. We do not accept any responsibility to any person for its accuracy and do no more than pass it on. All interested parties should make and rely upon their own inquiries in order to determine whether or not this information is in fact accurate.

3 2 1

Price	SOLD
Property Type	residential
Property ID	6
Land Area	212 m ²
Floor Area	139 m ²

Agent Details

Office Details

Victorian House & Land Specialists
8 Universal Way Cranbourne West VIC 3977
Australia
03 5995 3911

