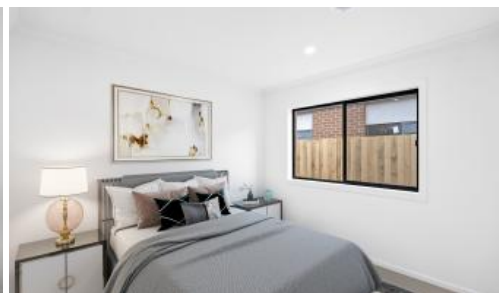


Just Listed



3 Vizsla St, Cranbourne East



750K-800K BRAND NEW STAMP DUTY CONCESSION

3 VIZSLA STREET, CRANBOURNE EAST BRAND NEW

60/90 DAYS SETTLEMENT

BIG STAMP DUTY SAVING ON BRAND NEW HOME

LAND SIZE 375 SQM

BUILD SIZE 213 SQM / 23 SQUARES

- 40MM STONE TO KITCHEN
- 20MM STONE TO BATHROOM & ENS
- 900MM APPLIANCES
- DISHWASHER
- HEATING AND COOLING
- DOWNLIGHTS
- FLYSCREEN TO WINDOWS
- FLY SCREEN SLIDING DOORS
- CAPPED REFRIGERATED WATER POINT

🛏 4 🚿 2 🚗 2 📏 375 m2

Price 750K - 800K NO STAMP
DUTY FOR FHB

Property
Type Residential

Property
ID 6880

Land
Area 375 m2

Floor
Area 213 m2

Agent Details

Sam Rahman - 0412300326

Office Details

Victorian House & Land Specialists
8 Universal Way Cranbourne West
VIC 3977 Australia
03 5995 3911

- EXPOSED AGG DRIVEWAY ,
- PLUS MUCH MORE



BOOK IN AN APPOINTMENT TO VISIT DISPLAY TO GET A FULL BREAKDOWN OF INCLUSIONS AND EXCLUSIONS.

*Land is available at the time this publication was advertised. Kindly enquire with agent for availability. The price does not include transfer duty, settlement costs, community infrastructure levies imposed, or any other fees or disbursements associated with the settlement of the land. Building Construction price is subject to additional design guidelines & travel when applicable. Base price includes standard brick façade. Price/information is subject to change without notice. Images are for illustration purpose only and house is to be constructed.

The above information provided has been furnished to us by the vendor/s. We have not verified whether or not that information is accurate and do not have any belief in one way or the other in its accuracy. We do not accept any responsibility to any person for its accuracy and do no more than pass it on. All interested parties should make and rely upon their own inquiries in order to determine whether or not this information is in fact accurate.