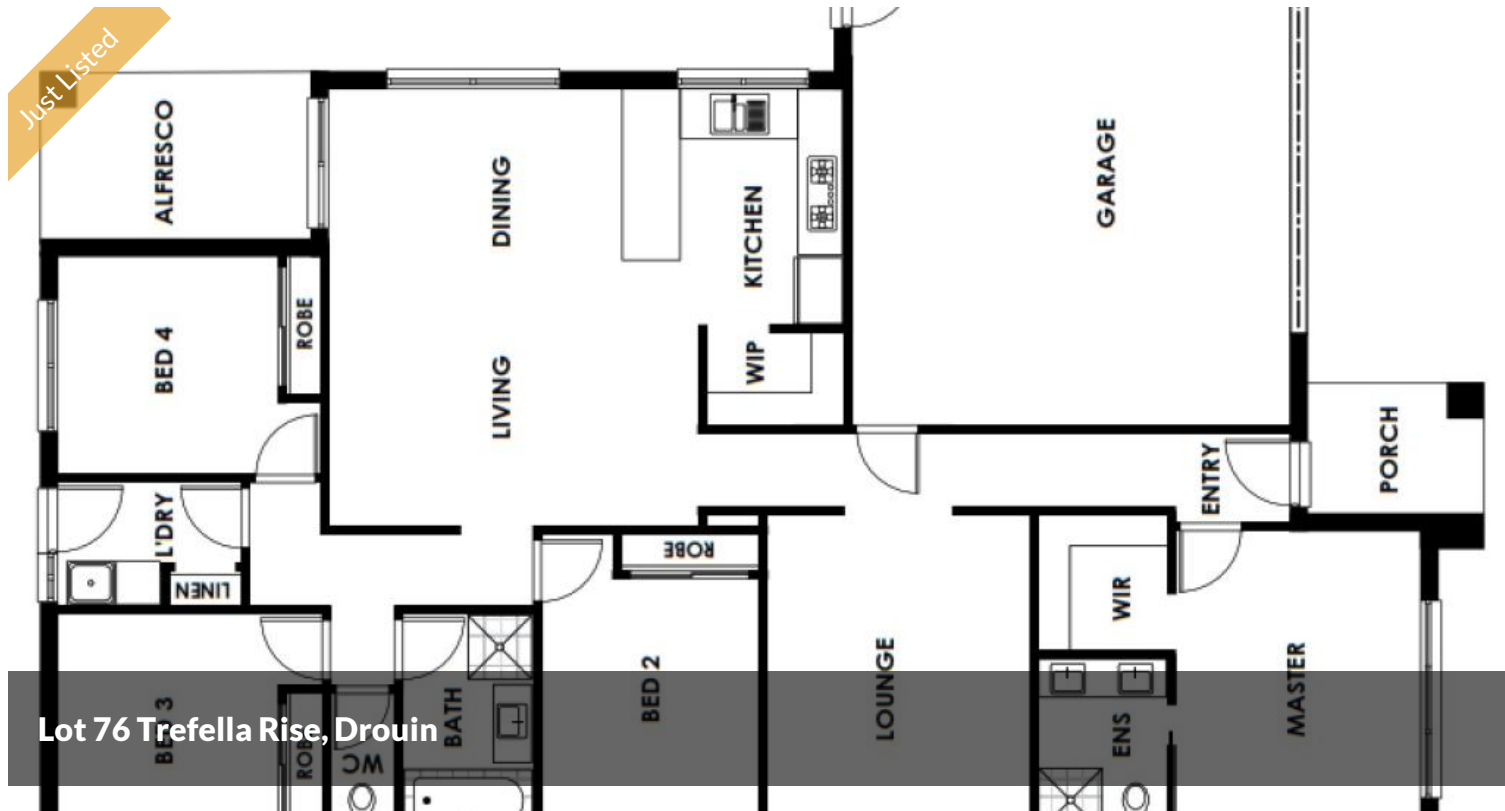
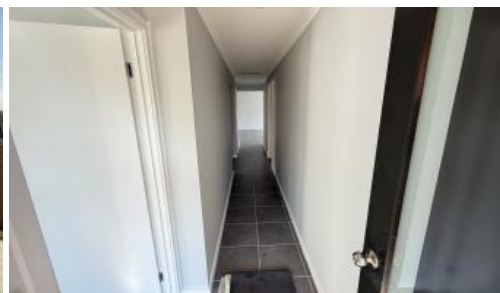


Just Listed



Lot 76 Trefella Rise, Drouin



## BRAND NEW H&L!

Discover Your Dream Home: Brand New House & Land Packages Await You!

Are you ready to step into the home of your dreams? We are thrilled to present our latest offerings of exquisite brand-new homes that are now available for sale. This is your chance to own a brand-new home with all the modern conveniences you desire, and we have flexible finance options to make it easier than ever.

- Lock up garage with panel lift door.
- Concrete to Driveway, Porch and Outdoor Living Area
- Builders site clean to front and rear
- Ducted heating throughout
- Overhead cupboards to Kitchen
- 900mm Kitchen Appliances
- 20mm Stone benchtops to kitchen

4  2  420 m2

Price	\$625,000
Property Type	Residential
Property ID	6900
Land Area	420 m2
Floor Area	209.58 m2

### Agent Details

Matthew Robins - 0434793008

### Office Details

Victorian House & Land Specialists  
8 Universal Way Cranbourne West  
VIC 3977 Australia  
03 5995 3911



- Quality floor coverings throughout

Contact Matthew at 0434 793 008 today to book an inspection. Don't miss out on the opportunity to secure your dream home!**Included Upgrades**

\* Price/information is subject to change without notice.

The above information provided has been furnished to us by the vendor/s. We have not verified whether or not that information is accurate and do not have any belief in one way or the other in its accuracy. We do not accept any responsibility to any person for its accuracy and do no more than pass it on. All interested parties should make and rely upon their own inquiries in order to determine whether or not this information is in fact accurate.