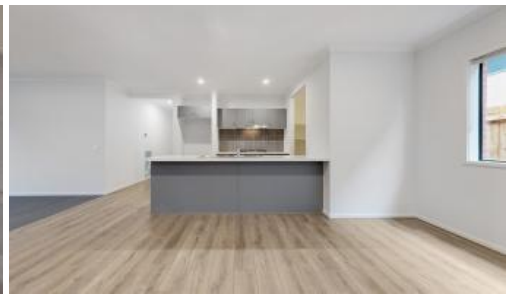
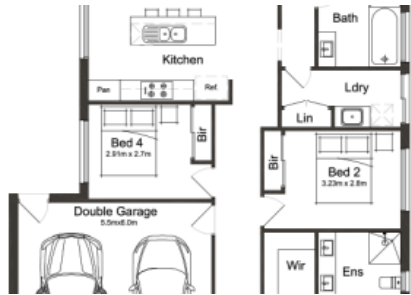




Lot 21 Grantville-Glen Alvie Road (Rosea Lane), Grantville



## HOUSE & LAND FOR SALE!

Discover Your Dream Home: Brand New House & Land Packages Await You!

Are you ready to step into the home of your dreams? We are thrilled to present our latest offerings of exquisite brand-new house and land packages that are now available for sale. This is your chance to own a turnkey home with all the modern conveniences you desire, and we have flexible finance options to make it easier than ever.

What's included:

- High-quality, turnkey inclusions to make your move-in seamless.
- Modern and stylish designs that meet your lifestyle needs.
- All the amenities and features you've ever wanted in your new home.

Let's make it happen: Contact Matthew at 0434 793 008 today for more information. Don't miss out on the opportunity to secure your dream home!

Included Upgrades:

- 2740 Ceiling heights
- 2340 External & internal doors

🛏 4 🚿 2 🚗 2 📏 325 m2

|               |             |
|---------------|-------------|
| Price         | \$586,200   |
| Property Type | Residential |
| Property ID   | 7020        |
| Land Area     | 325 m2      |
| Floor Area    | 179.48 m2   |

### Agent Details

Matthew Robins - 0434793008

### Office Details

Victorian House & Land Specialists  
8 Universal Way Cranbourne West  
VIC 3977 Australia  
03 5995 3911



- 20mm Stone benchtops throughout
- 900mm stainless steel Kitchen appliances including dishwasher
- Quality floor coverings throughout
- Porcelain tiles splashback
- LED Downlights throughout
- Flyscreens to all operable windows
- Alarm system with remote control to garage

\* Price/information is subject to change without notice. House is to be constructed - Images are for illustration purposes only.

The above information provided has been furnished to us by the vendor/s. We have not verified whether or not that information is accurate and do not have any belief in one way or the other in its accuracy. We do not accept any responsibility to any person for its accuracy and do no more than pass it on. All interested parties should make and rely upon their own inquiries in order to determine whether or not this information is in fact accurate.